

Congratulations on choosing the Speedheater Cobra. This compact, lightweight paint remover is particularly effective at stripping paint from window sashes and intricate, profiled surfaces, such as moldings, spindles, and balusters.

Like its big brother, the Speedheater™ 1100 S, the Cobra uses infrared (IR) radiation to safely break the bond between multiple layers of paint and the wood substrate. Compared to traditional heating methods, the relatively low working temperature (200° - 400° F) does not vaporize lead, or other harmful chemicals, or pose a fire hazard **as long as it's used as directed.**

This method also kills rot and mildew and dries out excess moisture; it's environmentally friendly, gentle to the wood, and enables the wood to be immediately primed and painted.

To ensure the safest and most effective use of the Cobra, we **urge** you to carefully read all of the following operating instructions and safety precautions before using it. Improper handling can result in personal injury or fire.

Follow Lead-Safe Work Practices Whenever the Presence of Lead-Based Paint is Known or Suspected. For More Information, Visit: <https://www.epa.gov/lead>

Warning! Read and understand all safety instructions prior to using this tool. Failure to follow the directions listed below may result in electric shock, fire, or serious injury. **Always follow all Federal, State, and local laws and regulations.**

Contents

- **Safety Precautions**
- **Technical Specifications**
- **Instructions for use**
- **Tips & Techniques**
- **Accessories**
- **Cleaning and Maintenance**
- **Spare Parts List**
- **Exchanges of IR-module**

Safety Precautions

Warning! Read and understand all safety instructions prior to using this tool. Failure to follow the directions listed below may result in electric shock, fire, or serious injury. **Always follow all Federal, State, and local laws and regulations.**

Save these instructions for future reference.

Work Area

1. **KEEP WORK AREA CLEAN AND WELL-LIT.** Cluttered surfaces and dimly lit workspaces increase the risk of fire and personal injury.
2. **WORK SAFELY AT HEIGHTS:** When using ladders and scaffolding, ensure that the equipment is properly setup on stable ground. Use all necessary safety equipment, and firmly attach all anchoring points. Follow all of the safety instructions that accompany this equipment.
3. **KEEP BYSTANDERS AWAY:** Do not let unauthorized people onto the worksite, and do not permit anyone to handle this tool without proper training.
4. **FORBID CHILDREN, PREGNANT (OR POTENTIALLY PREGNANT) WOMEN AND NURSING MOTHERS FROM ENTERING THE WORK AREA UNTIL ALL WORK IS DONE AND THOROUGHLY CLEANED UP.**

Fire Prevention

5. **BE PREPARED:** Always keep a fire extinguisher close at hand. In case of fire, switch the tool off, make sure everyone is safe, then call 911 or 112 for assistance.
6. **DO NOT USE THIS TOOL NEAR FLAMMABLE LIQUIDS OR GASES.** Heat from the IR tubes or the electrical components might cause them to ignite or explode.
7. **LIMIT THE HEATING TIME:** Apply only enough heat to make the paint pliable. Paint is ready to be scraped off when it's bubbling and smoking at the same time (**1-3 seconds is usually enough**). Excessive heating can potentially mar the wood, release toxic fumes, and start a fire.
8. **NEVER LEAVE THE TOOL UNSUPERVISED:** The Cobra should never be left unsupervised when in operation. After use, it should be switched off and allowed to cool completely before it's left unattended.

9. **KEEP A WATER SPRAYER ON HAND** to douse embers or mist cracks and crevices to prevent an unseen spark from festering.

Electrical Safety

10. **ELECTRIC SHOCK SAFETY:** Avoid bodily contact with grounded surfaces such as pipes, radiators, stoves or refrigerators. There is a risk of electric shock if your body is grounded.
11. **ENSURE THAT THE ELECTRICAL OUTLET IS PROPERLY INSTALLED AND GROUNDED:** Check with a qualified electrician if in doubt. Should the tool suffer an electrical short the ground serves as a path to carry electricity away from the user. **NEVER** use an adapter plug to enable this tool to connect to an ungrounded outlet.
12. **ALWAYS USE A POWER OUTLET WITH A Ground Fault Circuit Interrupter (GFCI)** when working with this tool. A GFCI is designed to immediately cut the power if the ground wire ever becomes energized.
13. **DO NOT USE THE TOOL IN THE RAIN:** If the wiring gets wet it may cause a short circuit.
14. **ALWAYS USE THE ON/OFF SWITCH:** Never disconnect the power cord without first turning the switch off. Always verify that the switch is in the "off" position before it's packed away; this will ensure that the heating elements are never accidentally fired up.
15. **DISCONNECT THE PLUG FROM THE POWER SOURCE BEFORE MAKING ANY ADJUSTMENTS:** Failing to do so may lead to burns or electric shock.
16. **DO NOT ABUSE THE POWER CORD:** Never use the cord to carry the tool or to yank the plug from the outlet. Keep the cord away from heat, oil, sharp edges or moving parts. **Be especially careful to make sure the power cord does not come into contact with any of the hot surfaces on the tool.** Replace damaged cords immediately. Damaged cords increase the risk of electric shock.
17. **EXTENSION CORDS:** Always use grounded extension cords that are approved for the required amperage and environmental conditions.

Personal protection

18. **USE PROPER SAFETY EQUIPMENT:**
Always wear heat-protective gloves, eye protection, and a respirator or dust mask, also nonskid safety shoes and hardhat where appropriate.
19. **PREVENT BURNS:**
Do not allow bare skin to come in to contact with IR bulbs or metal shroud while in operation, as these elements are extremely hot. Also avoid touching recently heated paint, putty or varnish. To adjust angle of heating element as necessary, use the cooled Support bar (fig. 1).
Do not touch any other metal parts because they will be extremely hot (fig. 2).
20. **AVOID INHALING FUMES AND DUST:**
Smoke and gas can contain harmful substances. Ensure there is effective ventilation (especially when working indoors) and always wear a properly fitted respirator or high-quality (N95 or N100) dust mask during paint removal.
21. **DO NOT OVERHEAT.**
Exposing the paint to infrared radiation beyond the point where it bubbles and smokes increases the risk of exposure to toxic fumes (1 – 3 seconds is usually sufficient heating time).
22. **CONTAIN THE DEBRIS:**
When used as directed, this low-temperature paint remover does not vaporize lead, but lead-based paint debris must be thoroughly contained and carefully disposed of. For more information about how to follow Lead-Safe Work Practices, and how to get certified as a Lead-Safe Remodeler, visit: <https://www.epa.gov/lead>

Tools Use and Care

23. **HANDLE WITH CARE:**
Avoid dropping the Cobra as it may cause irreparable damage to the housing and the fragile infrared (IR) tubes. Cracked IR tubes or damage to the housing void the warranty.
24. **TOOL MAINTENANCE:**
Failure to take proper care of this tool may lead to malfunction, fire hazard, risk of electric shock and thereby personal injury. Make sure that the IR tubes and reflectors are clean and in working order. Dirty tubes and reflectors reduce efficiency and could cause a fire. Routinely tighten screws and inspect the power cord, IR tubes, and other parts for signs of damage. Replace damaged parts immediately. If an IR tube should break, switch the tool off, pull the plug, allow

time for cooling, then replace the tube. Always use gloves or a rag when handling an IR tube. Never touch it with your hands.

25. **APPROVED ACCESSORIES, PARTS AND SERVICE:**
Use only manufacturer-approved replacement parts and accessories for this tool. Using components not specified in the spare parts list, or otherwise approved by the manufacturer, may cause personal injury and render the warranty invalid. Repairs must be performed by a qualified technician or a factory-authorized service center.

When used properly, the Cobra will not vaporize lead paint or create a fire hazard.



Technical specification

Speedheater Cobra. Patented.

CE approved in accordance with the European Product Safety Standards: EN 60335-1, EN 60335-2-45.

Heat surface Dimensions:

Length: approx. 3,5" / 92 mm

Width: approx. 2,8" / 68 mm

Volts:

220-240V/3 amps, 120V/5.8 amps, 110V/6.4 amps
Check voltage on the marking of appliance.

Watts: 700 W

Amps: 3 / 5.8 / 6.4

Electrical Connection:

1 phase standard grounded outlet.

Cord: 16 gauge 3 wire, 8 feet long.

Switch: ON/OFF

Optimum exposure time for paint

removal applications: 1 to 3 seconds.

The paint is ready to be scraped off when it is both bubbling and smoking simultaneously.

Operating Temperature:

Approximately 200° - 400° F (100° - 200°C)

when used according to instructions.

Excessive heating may create a fire hazard or vaporize lead particles.

Instructions for use

Starting Up

- Connect the cord to a 240/120/110V grounded outlet.
- Ensure that any extension cords used are approved for the amperage and the environment.
- Move the switch to the ON position, and rest the Cobra on the Support Bar with the heat surface facing up (see fig. 3b).
- Allow the tool to warm up for approximately 2 minutes. It's ready for use when the IR-tubes glow bright orange.

General Paint Stripping

- Use heat-protective gloves and a properly fitted (N100) respirator or a high-quality dust mask (N95 or better).
- Keep fire extinguisher and spray bottle of water nearby.

- Use support bar to adjust angle of heating-element as necessary (fig. 1). Do not touch any other metal parts because they will be extremely hot (fig. 2)!
- Hold Cobra by the neck, rather than the end, of the handle, and grip it between thumb and forefingers, as if it were a pencil (fig. 4).
- Work two-handed, with Cobra in one hand and a high-quality, properly sharpened pull-scraper in the other.
- Suspend the heating element slightly above the paint surface for 1 – 3 seconds, just long enough for the paint to begin smoking and bubbling.
- Move the tool to an adjacent surface and scrape the paint off the first area while the second one heats up (Fig 8).
- Do not allow the heating element to linger any longer than necessary over the paint surface.
- Practice until the process of "heating," "moving," and "scraping" becomes one fluid motion.
- When taking a short break, set the Cobra upside down on a stable, fireproof surface (fig. 3b), or hang it safely in the air (fig. 3a). Never leave this tool unsupervised unless it's unplugged and has fully cooled.

Warning:

The Cobra's concentrated heating element is designed to loosen narrow or profiled areas of paint much faster than the original Speedheater. Do not let it linger in one place for more than a few seconds!

Window Procedure

The Cobra's concentrated heating surface makes it particularly effective for removing old paint and glazing from window sashes.

- If sash has been removed from frame, secure it to a work surface with clamps or jigs.
- Protect fragile historic glass from heat damage by covering it with metal flashing or aluminum foil.
- Remove the putty first, then the paint.
- Strip the flat surfaces following the procedures described above (Fig 8).

- Use a profile scraper on contoured window surfaces.
- To remove glazing putty, place the shroud on the surface of the glass and heat the putty until it's soft enough to be carved away with a chisel (Fig 9). Old, rock-hard putty may require two or more passes along each section of the window before it's soft enough to be easily peeled off.

Shutting Down

When work is complete, move the switch to the OFF position and unplug the cord. Place the Cobra upside down and allow the IR-tubes to cool before it's packed away. Never leave the tool unattended until it has completely cooled.

Tips & Techniques

- For best results use high-quality pull-type scrapers, and sharpen the blades as soon as they begin to dull.
- Scraper blades are available in a variety of shapes. Choose one that most closely matches the painted surface.
- A copycat and rotary grinding tool can be used to modify scraper blades to remove paint from uncommon profiles.
- For best results plan on making two passes over each surface. The first pass removes the bulk of the paint; the second one pass gets the last of the debris that was left behind and leaves a smooth, almost spotless surface that simply needs a light sanding prior to priming and painting.
- To make old, dried out old paint or water-based paint more responsive to the effects of infrared radiation, pre-treat the painted surface with Speedheater Accelerator Oil, or raw linseed oil. Brush or spray on a light coating at least one hour before heating.

Accessories

A variety of scrapers and other accessories are available to lessen the drudgery of removing old paint and glazing. More information about these products is available on the web site.

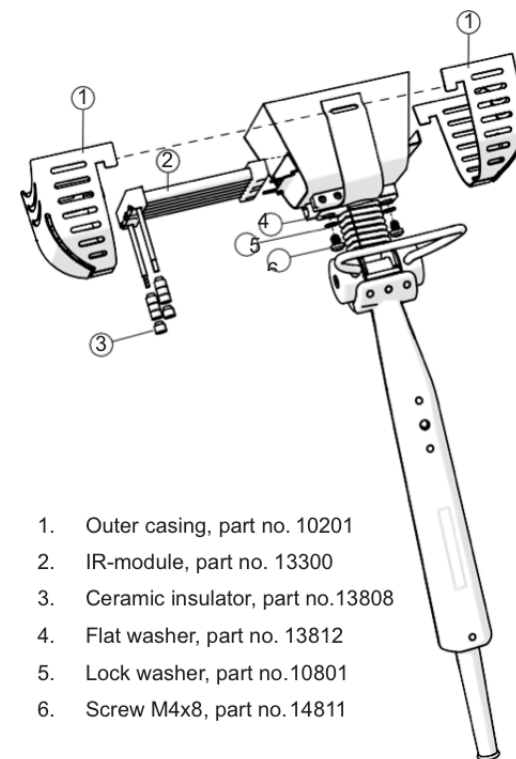
Cleaning and Maintenance

- Always ensure that the switch is turned off, the tool is unplugged, and has fully cooled, before beginning any maintenance work.
- In order to maintain the product's safety and efficiency, the IR tubes and reflectors must be kept clean by wiping them using a cloth moistened with denatured alcohol. Always wear protective gloves during this process and never touch the bulbs with bare fingers.
- Bulb-changing, see instruction.

Spare Parts List

Repairs should be carried out only by a properly qualified electrician to avoid the risk of accidents or injury.

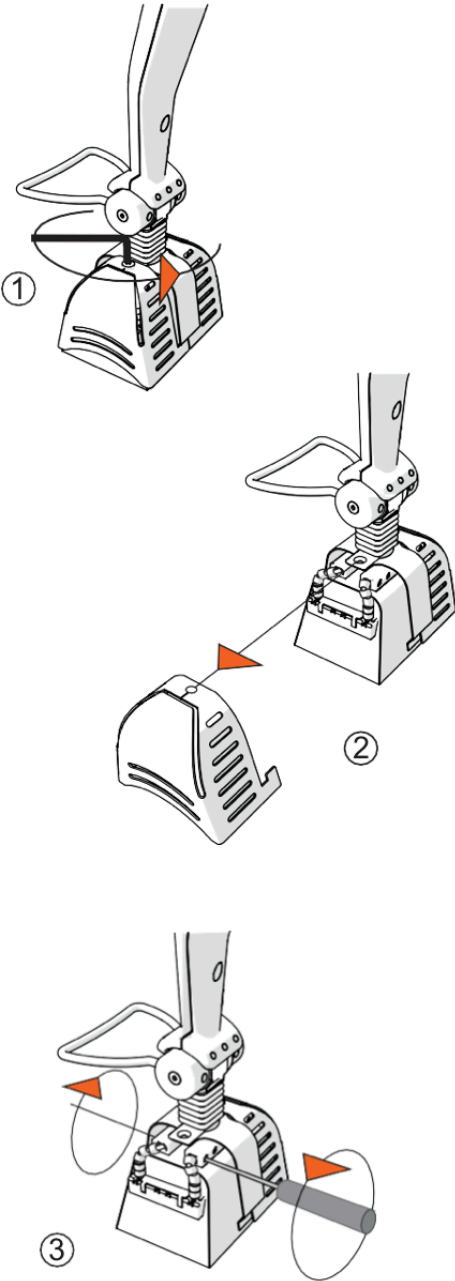
When ordering spare parts, always give the Power Tools name and the part name and number.



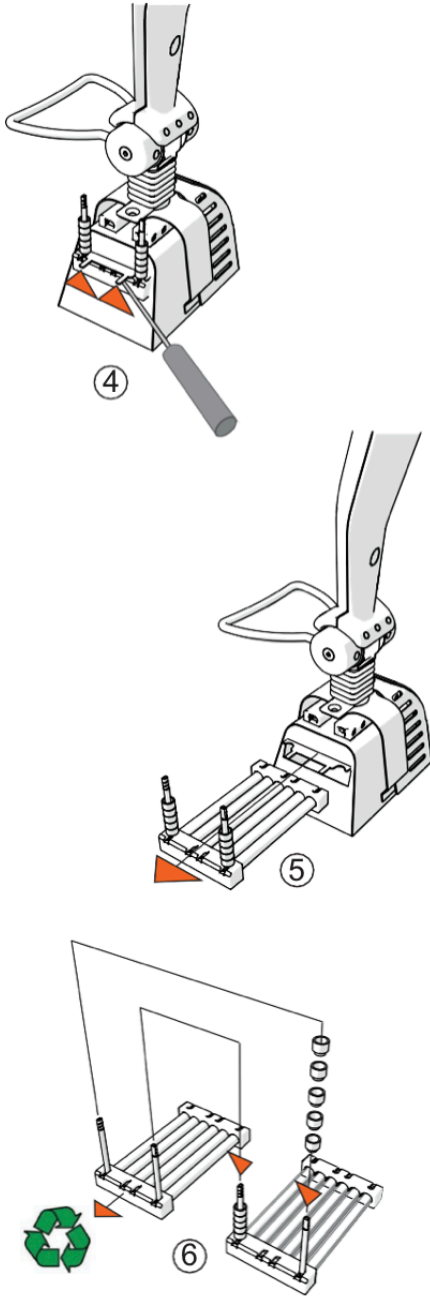
1. Outer casing, part no. 10201
2. IR-module, part no. 13300
3. Ceramic insulator, part no. 13808
4. Flat washer, part no. 13812
5. Lock washer, part no. 10801
6. Screw M4x8, part no. 14811

The design of the tool is subject to changes without prior notice.

Exchanges of IR-module



ENG



Reassembly takes place in reverse order.
5-4-3-2-1

